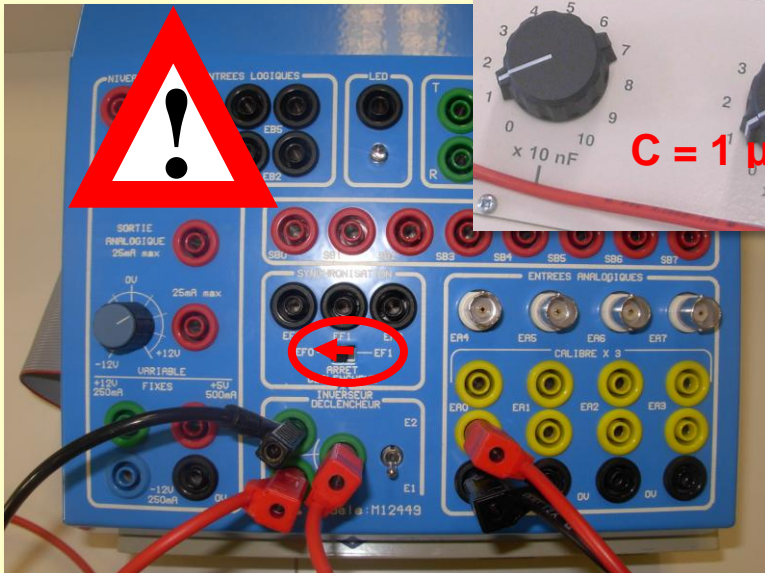
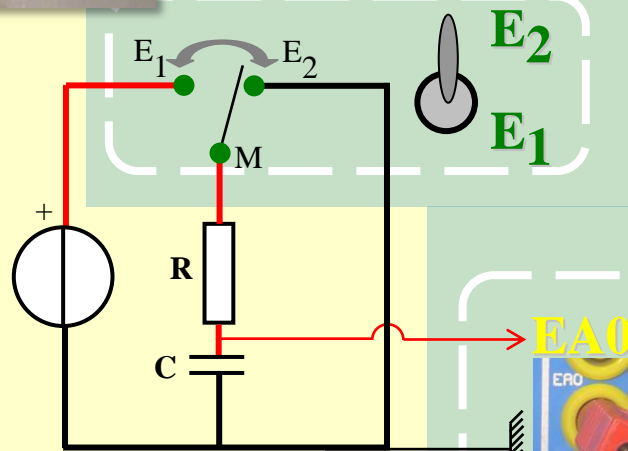
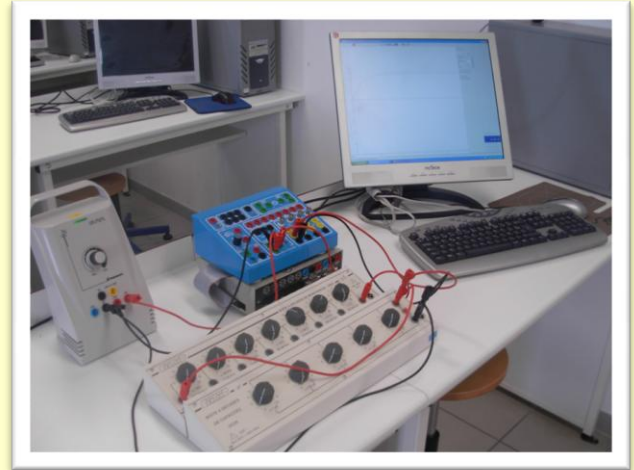
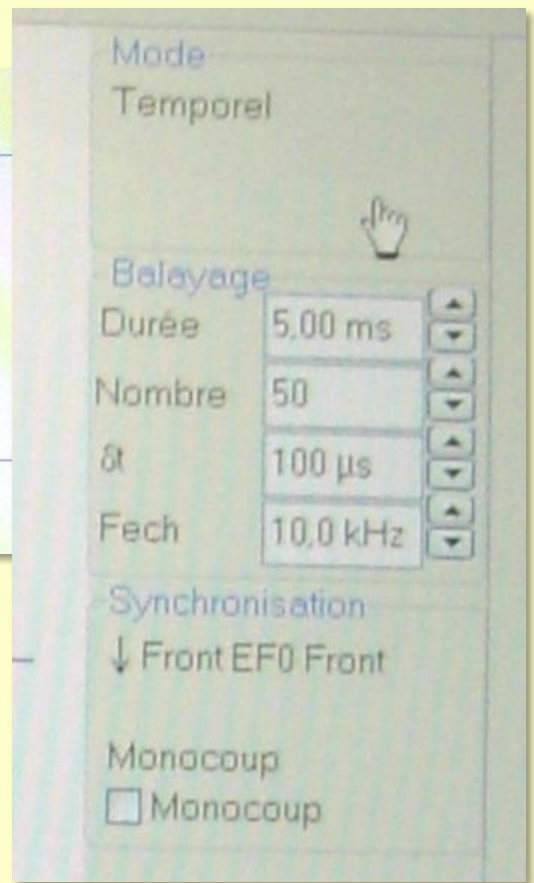
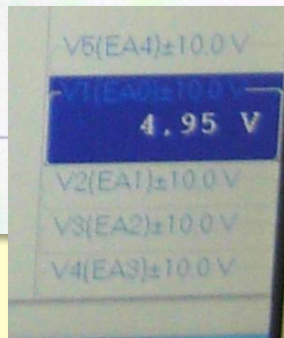
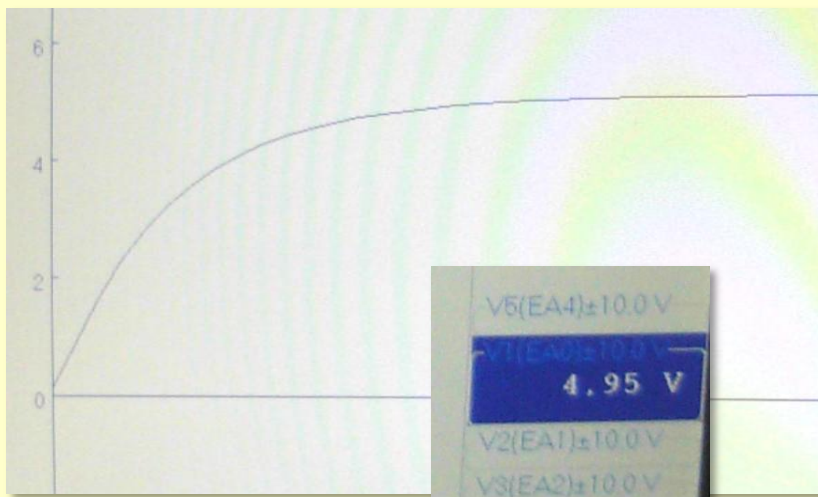


TP *La charge d'un condensateur* correction

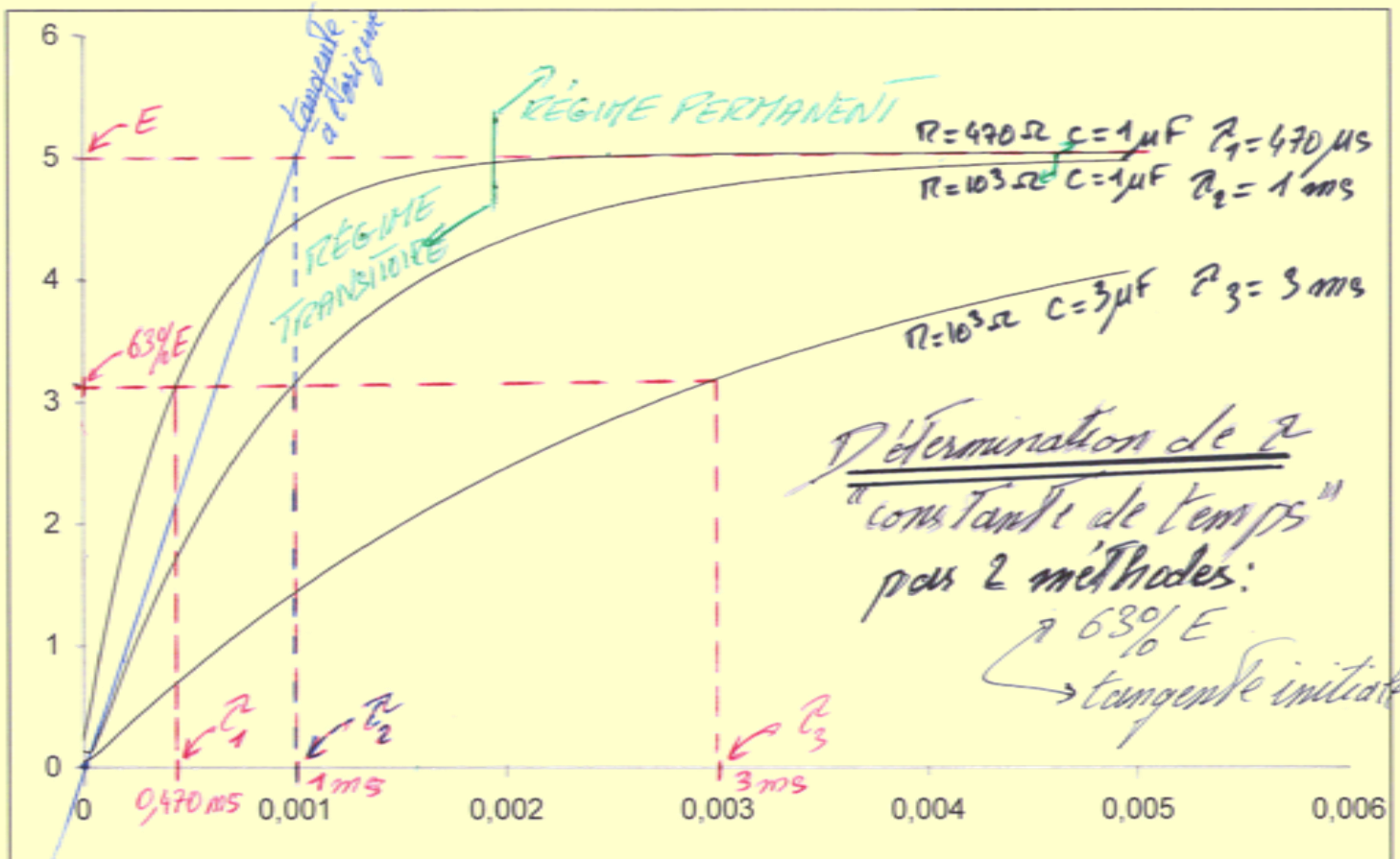
Protocole expérimental





Interprétation

- Régime transitoire des grandeurs qui varient dont la caractéristique est $\tau (= RC)$.
- Régime permanent des grandeurs constantes au bout de 4 à 5 τ .



- La méthode des 63% (en charge, 37% en décharge) est plus rigoureuse que le placement de la tangente à l'origine